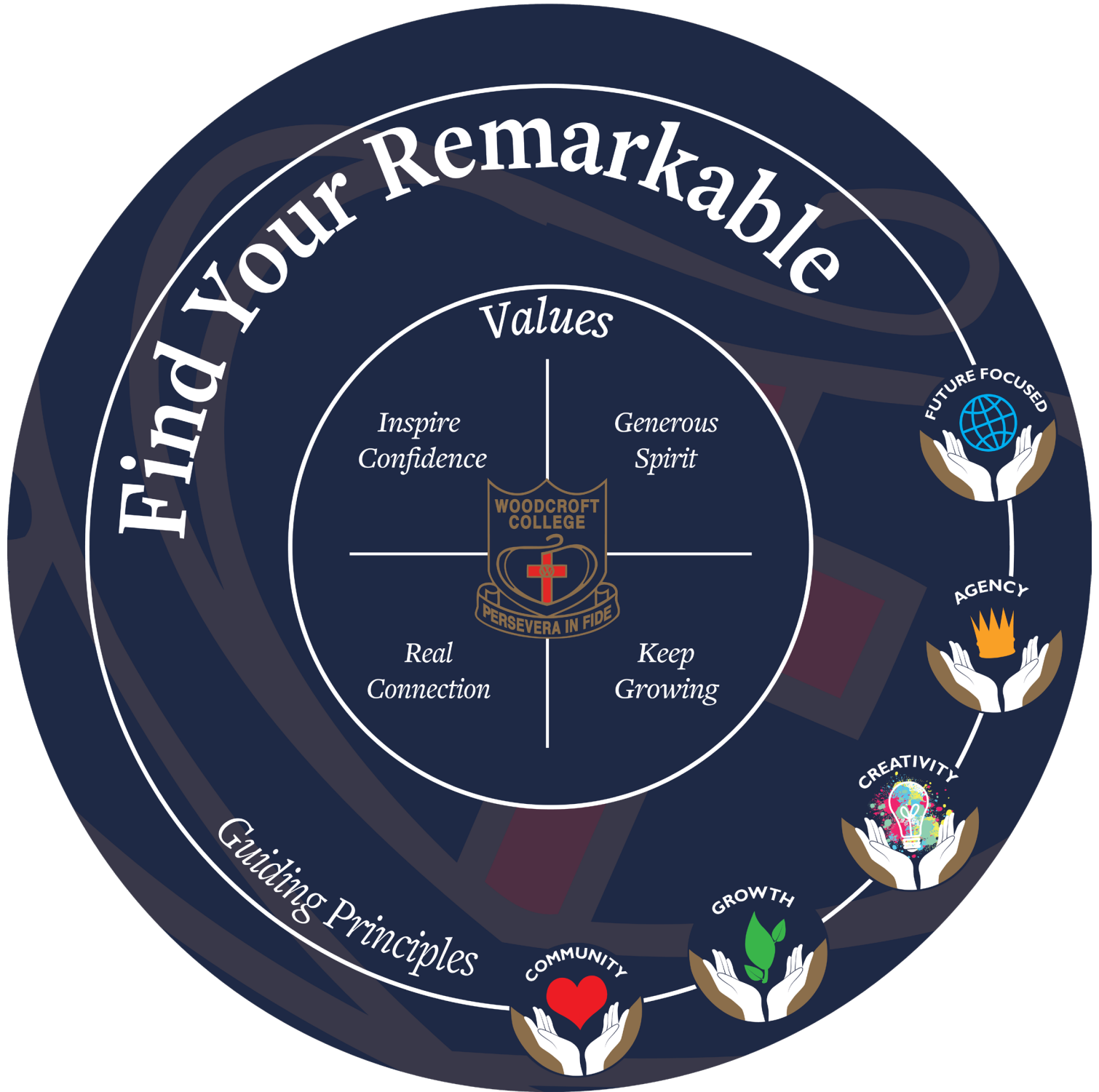


# WOODCROFT COLLEGE

## Strategic Plan



2022 - 2027



# From the Principal

When Woodcroft was conceived, it was built on strategy – to provide a service which represented a perceived gap in the educational offerings of the day. That was in 1989. The world – and the educational marketplace – in which Woodcroft College now resides is characterised perhaps more by the differences than the similarities from the one in which it was conceived. And, tomorrow's educational landscape will change again.

Outlined on the following pages are the purpose, values and priorities comprising Woodcroft's approach to its organisational improvement plan. These are strategies made for their time, while respecting our College's past.

Woodcroft cannot rest simply or complacently on its reputation. It must respond to the changing world in which it operates so that it continues to be resilient, contemporary and relevant. And, as the College continues to change and grow, it should be from a position of collectively aligned ideals.


This plan acknowledges the shifting influences operating in education and Woodcroft's distinctive context. And, the plan openly recognises the need for the College to remain agile, responsive and dynamic in that environment.

A strategic plan should work within the boundaries of its organisation's charter. What is Woodcroft here to do? What is its position, direction, mission? And the Strategic Plan should support Woodcroft's values. What is it that Woodcroft believes in?

Woodcroft's purpose is achieved through the active creation of a shared understanding about learning, and through careful stewardship, creating and refining the environment and conditions where our students can thrive. That shared understanding reflects the values and intentions which founded our College.

The development of our Strategic Plan builds on these very propositions. It is a distillation of Woodcroft's objective to be ever better.

Shannon Warren  
Principal



*"Woodcroft cannot rest simply or complacently on its reputation. It must respond to the changing world in which it operates so that it continues to be resilient, contemporary and relevant."*



## Our Purpose

At Woodcroft College we exist to shape well-balanced, successful young people.

We encourage our students to explore and understand their potential. We teach kindness and generosity to ensure that when our students leave us, they understand how the world works, how they can be part of it, how they can create change and always work to be the best they can be. We want our students to be comfortable in their own skin, to express themselves and celebrate what makes them unique.

**In short, we help our students “*Find Your Remarkable.*”**



# Our Promise

*Find Your Remarkable* is much more than a whimsical turn of phrase. It is our promise to all members of the Woodcroft College community.

It is a very personal promise. It's not about grandiosity or hubris. It's about encouraging and guiding staff, students and our community to understand their potential.

And there are some key reasons why Woodcroft is in a wonderful position to deliver on this promise...

We create an environment where staff, students - and their parents - feel a strong sense of

**belonging**. Because we know that a sense of belonging is deeply important to emotional health and personal wellbeing.

We form genuine **partnerships**. Because we are committed to deliver the best outcomes for all members of our community.

We offer a **balanced** curriculum and co-curriculum designed to uncover and nurture our students' strengths. Ours is not a curriculum obsessed with ATAR and score cards.

Woodcroft is a **modern** school - young, energetic and future-focused. We are not shackled by the burden of history and tradition. We are creating our future.

And very importantly, Woodcroft College is **right-sized**. Not too big, not too small. Just right.

Our goal will never be growth for growth's sake. We will maintain the number of students and classes at each year level to support strong, social relationships and real connections.

*"Find Your Remarkable is about encouraging and guiding staff, students and our community to understand their potential."*







# Our Values

## Inspire Confidence

At the very heart of Woodcroft College is a desire to inspire confidence in our students and each other. We support our students to be the best they can be. We help them develop a passion for life rather than a hunger for approval. And we provide an environment that builds character - mind, body and spirit. At Woodcroft, we want our students to join in, take risks and have a go. And this challenge also extends to our staff, as everyday we ask "who have I inspired today?"

*"The same light you see in others is shining in you, too."*



Morgan Harper Nichols (1990 - ),  
American artist, poet and musician.

## Generous Spirit

As a school founded in the Anglican tradition of kindness and compassion, Woodcroft College is recognised for its spirit of generosity, social justice and service. We encourage our students to understand, accept and value each others' differences without judgement. And we proudly display the virtues of natura and magnanimity - to be the very best version of ourselves - not just for yourself, but for others.



*"We make a living by what we get; we make a life by what we give."*

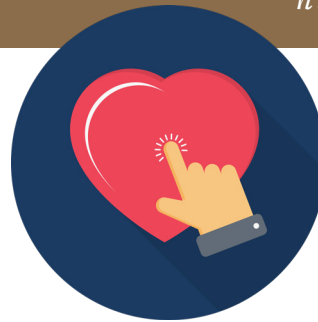
Winston Churchill (1874 - 1965),  
Former British Prime Minister.

## Real Connection

Woodcroft is home to a close-knit community of educators, students and their families. In a world that has become increasingly disconnected, we pride ourselves on building genuine, lasting relationships. We respect these relationships because ours is a partnership and a contract with our community. We are trusted to nourish those who look to us for knowledge and guidance.

And as colleagues, the relationships among staff at Woodcroft allow us to support and challenge each other, because the work we do matters.

*"In a world of algorithms, hashtags and followers, know the true importance of human connection."*



Anonymous

## Keep Growing

A future-focused, growth mindset is a fundamental characteristic of healthy, happy individuals - and it is a central tenet for all at Woodcroft. We provide a supportive environment which encourages students to embrace change and expand their horizons. We create space for young people to grow and learn through diverse experiences. And we provide them with the tools and knowledge needed to embrace their futures with grace and vigour.



*"Don't go through life, grow through life."*

Eric Butterworth (1916 - 2003),  
Canadian-American author.

# Our Priorities



## Strengthen the Core

*Strengthening the core is about having the right combination of staff, culture, curriculum and co-curriculum that delivers the best possible outcomes for our students, families and the College.*

### We will:

- Review, adapt and deliver a future-focused, engaging and responsive curriculum to meet the changing needs of students as they move through their educational journey at Woodcroft College.
- Provide a challenging and engaging range of co-curricular activities.
- Build a community of professional practice that supports staff to reflect on, question and bring to life the Woodcroft College Guiding Principles.
- Ensure effective Governance through a College Council that brings a wide-ranging set of skills to best serve our school.
- Deepen and foster an inclusive and invitational spiritual environment as we celebrate being Anglican.



## Spaces and Places

*Woodcroft is firstly about people, however Woodcroft is also very much a place for people to come together. Spaces and Places is about providing clarity for the future development of the Woodcroft campus. In particular, guiding the size and nature of the investment in renewing our Junior School.*

### We will:

- Maintain a high standard of facilities across the College.
- Optimise resources and facilities to provide inspiring learning spaces.
- Further incorporate new technologies and approaches to learning to support teachers and students to be digitally agile.
- Manage annual budget and engage in long range financial planning to support sustainability and development outcomes.
- Complete the next exciting phases in our Master Plan by creating a STEM Centre and building a new Junior School.



## Growth and Community

*Woodcroft does not exist in a bubble, it is very much connected with its community. Growth and Community is about intentionally developing those connections for the benefit of students, our community and Woodcroft itself.*

### **We will:**

- Foster a sense of belonging and real connection within our diverse and dynamic community.
- Provide a safe physical and emotional environment for staff, students and our community.
- Deepen the connection with Woodcroft College Old Scholars.
- Establish and leverage links with tertiary institutions, industry organisations and members of the wider community to support and extend our students and staff in developing entrepreneurial skills.
- Promote a culture of giving and advance our philanthropic community connection.

*"We are enacting Find Your Remarkable through three Strategic Priorities"*





**Woodcroft College**

**An Independent Coeducational Anglican ELC - Year 12 School**

PO Box 48, Morphett Vale South Australia 5162 T: +61 8 8322 2333 [woodcroft.sa.edu.au](http://woodcroft.sa.edu.au) Cricos #01645K