



# Uniform Requirements



*Find Your Remarkable*



# OUR PURPOSE

At Woodcroft College we exist to shape well-balanced, successful young people.

We encourage our students to explore and understand their potential. We teach kindness and generosity to ensure that when our students leave us, they understand how the world works, how they can be part of it, how they can create change and always work to be the best they can be. We want our students to be comfortable in their own skin, to express themselves and celebrate what makes them unique.

In short, we help our students *"Find Your Remarkable."*

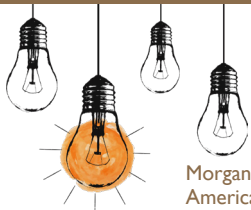


## OUR VALUES

### Inspire Confidence

At the very heart of Woodcroft College is a desire to inspire confidence in our students and each other. We support our students to be the best they can be. We help them develop a passion for life rather than a hunger for approval. And we provide an environment that builds character - mind, body and spirit. At Woodcroft, we want our students to join in, take risks and have a go. And this challenge also extends to our staff, as everyday we ask "who have I inspired today?"

*"The same light you see in others is shining in you, too."*



Morgan Harper Nichols (1990 - ),  
American artist, poet and musician

### Generous Spirit

As a school founded in the Anglican tradition of kindness and compassion, Woodcroft College is recognised for its spirit of generosity, social justice and service. We encourage our students to understand, accept and value each others' differences without judgement. And we proudly display the virtues of natura and magnanimity - to be the very best version of ourselves - not just for yourself, but for others.



Winston Churchill (1874 - 1965),  
Former British Prime Minister

*"We make a living by what we get; we make a life by what we give."*

### Real Connection

Woodcroft is home to a close-knit community of educators, students and their families. In a world that has become increasingly disconnected, we pride ourselves on building genuine, lasting relationships. We respect these relationships because ours is a partnership and a contract with our community. We are trusted to nourish those who look to us for knowledge and guidance.

And as colleagues, the relationships among staff at Woodcroft allow us to support and challenge each other, because the work we do matters.

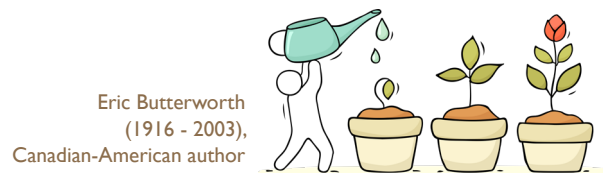
*"In a world of algorithms, hashtags and followers, know the true importance of human connection."*

Anonymous



### Keep Growing

A future-focused, growth mindset is a fundamental characteristic of healthy, happy individuals - and it is a central tenet for all at Woodcroft. We provide a supportive environment which encourages students to embrace change and expand their horizons. We create space for young people to grow and learn through diverse experiences. And we provide them with the tools and knowledge needed to embrace their futures with grace and vigour.



Eric Butterworth  
(1916 - 2003),  
Canadian-American author

*"Don't go through life, grow through life."*

## GUIDING PRINCIPLES



Our community is built upon strong relationships, shared values and is shaped by our unique experiences.



Our community enables us to grow and flourish together.



We are the creators and evaluators of a shared learning journey.



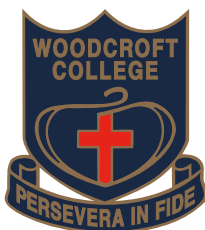
We are imaginative, innovative and take risks with our learning.



We are preparing for the future by developing capabilities and connecting learning to authentic real-world contexts.

# INTRODUCTION

The College is very proud of the uniform and its standing in the community. As parents, you have a role to play in helping to ensure that the dress code is adhered to. It is expected that students will wear the uniform with pride and in a neat, clean and appropriate manner. The uniform must be worn correctly from the time the student leaves home until the time the student returns home.



## College Logo and Badge

The College logo consists of:

- An empty cross as a sign of hope
- A serpent as a reminder of faith
- A heart-shaped shield as a token of love

The badge carries the logo and the College motto “Persevera in Fide” meaning “Persevere in Faith.”

The College colours are blue, gold and red. Blue and gold are associated with the Patron Saint, St Hilda of Whitby, and red is a seasonal colour of the church.

The Uniform Shop is located in Woodcroft Town Centre, Shop 5, 185-191 Bains Road (next to SA Pathology). Please refer to the College website for Uniform Shop opening hours.

If you have any questions after reading the information in this book, please do not hesitate to call or come in and see the staff in the Uniform Shop during shop hours.

# NEW UNIFORM

The new style uniform items will become compulsory from the start of the **2025** school year. New items include:

- blazer
- sub-school ties
- jumper
- summer dress
- winter skirt
- PE trackpants, shorts, softshell jacket and rugby jumper

In 2024, the College introduced the ELC play-based style uniform into Junior School for students in Reception.

From 2026, the play-based uniform will be worn by all ELC to Year 2 students. Year 3 onwards will wear the formal uniform.

# NOONE UNIFORM SHOP

All uniform items and up-to-date pricing, is available for viewing at <https://www.noone.com.au/school/woodcroft-college/shop>

## Trading Hours

For current term and holiday trading hours, please refer to the College website.

## Uniform Shop Location

Woodcroft Town Centre

Shop 5, 185-191 Bains Road (next door to SA Pathology)

## Uniform Shop Contact Details

T: 7260 3324 (during opening hours which are available on our website)

Email: [woodcroft@noone.com.au](mailto:woodcroft@noone.com.au)

## Pricing

Please refer to the Noone website for the most up-to-date pricing.

## Payment Methods

The Uniform Shop accepts cash and EFTPOS (Visa and Mastercard only). The Noone website accepts payment by credit card.

## Sizing

Most items of school wear run from size 2 to size 26. A visit to the Uniform Shop with your child will help you to determine the correct sizing. If the stock is not available to purchase from the Uniform Shop, you will be able to place an online order.

All new students will be invited to book a fitting appointment in the lead up to starting at the College.

# UNIFORM EXPECTATIONS

*Students from ELC to Year 12 are required to respect our College Values and uniform by:*

- Wearing the correct uniform items in a neat and tidy manner.
- Wearing the College blazer with their formal uniform to and from school in Terms 2 and 3 and for official events during all Terms in Year 7 to Year 12.
- Only wearing the College jumper with their formal winter or summer uniform in Year 3 to Year 12.
- Only wearing the rugby jumper with their PE uniform in Year 3 to Year 6.
- Only wearing the rugby jumper or softshell jacket with their PE uniform in Year 7 to Year 12.
- Wearing the correct socks and shoes for their play-based, formal or PE uniform.
- Wearing the correct sub-school tie in Term 2 and Term 3 in Year 3 to Year 12.
- Wearing the dress or skirt no shorter than mid knee length and never roll up a skirt at the waist.
- Only wearing the PE uniform on days when they have PE in Year 3 to Year 12.
- Wearing the PE polo with the play-based uniform on PE days in Reception to Year 2.
- Wearing their hat outside all year round in ELC to Year 6, and Term 1 and Term 4 in Year 7 to Year 12.
- Only wearing their Year 6 hoodie on PE days or Year 12 hoodie on days specified by the Head of Senior School.
- Not having their hair hanging over their eyes or their face at any time - hair that can be tied back, must be tied back with a Woodcroft Scrunchie, hair ribbon in school colours or navy, black or brown hair tie. Only hair colour or navy blue headbands and hair clips are permitted.
- Not wearing large or oversized bows of any colour or size.
- Having a neat and tidy hairstyle that is natural hair colour only and not extreme such as mullets, hair tattoos, dreadlocks or hair beading.
- Only wearing a black leather belt with pants in Year 7 to Year 12 (if required).
- Only wearing the Woodcroft College navy blue scarf in Term 2 and Term 3.
- Wearing no jewellery other than a wristwatch (smartwatches acceptable in Year 10 to Year 12) or single small plain gold/silver studs or sleepers (ELC to Year 9) or two small plain gold/silver studs or sleepers (Year 10 to Year 12) in ears only, as specified by the College.
- Wearing no make-up, nail polish, fake or acrylic nails or false eyelashes (subtle foundation acceptable in Year 10 to Year 12).
- Having faces that are clean shaven in Year 7 to Year 12.
- Only having natural eyebrows - no eyebrow splits, cuts or patterns are permitted.



## ELC TO YEAR 12 UNIFORM REQUIREMENTS

## ELC TO YEAR 2

From 2026, the play-based uniform will be worn by all ELC to Year 2 students.

### PLAY-BASED UNIFORM

#### OPTION 1

##### Dress



Must be worn with navy bike shorts or navy leggings underneath and can be worn with a navy skivvy (not available at the Uniform Shop).

#### OPTION 2

##### Short Sleeve Polo and Shorts



#### OPTION 3

##### Long Sleeve Polo and Trackpants



Polo can be worn with a navy skivvy underneath (not available from the Uniform Shop).

## ELC TO YEAR 2

### PLAY-BASED UNIFORM

#### PE POLO

OPTIONAL FOR ELC

COMPULSORY FOR RECEPTION TO YEAR 2

Hardy (green)



Morphett (blue)



McLaren (yellow)



Reynell (red)



#### Reception and Year 2 PE Uniform

The PE uniform can be worn for the full day that students have a PE lesson. The PE polo is worn with either the shorts or pants (see page 6), along with the sport socks (see page 8). Can also be worn with the sport softshell jacket or vest (see below).

### OUTERWEAR OPTIONS

Sport Softshell Jacket



Sports Softshell Vest



College Beanie



Worn in Terms 2 & 3 only. Students may also wear the beanie during outdoor play instead of a hat, except if the UV rating is over 3, then students are required to wear the College hat.  
Sun safe rules apply.

# ELC TO YEAR 2

## PLAY-BASED UNIFORM

### COMPULSORY ITEMS

#### Supportive Athletic Shoes



*No skate shoes/street shoe (ie: Adidas Samba/Converse/Vans or similar).*

#### Socks



Navy Socks

Not to be worn with PE uniform.

Sport Socks

Worn on PE days with PE uniform in Reception to Year 2.

#### College Hat



ELC to Year 2 students must have their hats on outside all year round - a "No Hat, No Play" Policy is enforced.

#### College Bag

**RECEPTION TO YEAR 2**



#### Document Wallet

**RECEPTION TO YEAR 2**



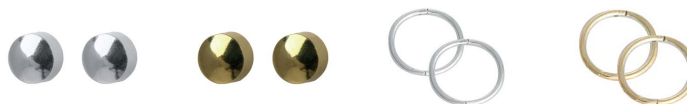
#### Library Bag

**RECEPTION TO YEAR 2**



## ADDITIONAL ITEMS

#### Earrings



Round studs only

Sleepers no larger than 14mm

The styles above are available from the Uniform Shop.  
Please see page 21 for detailed information on the styles and sizes allowed.

# YEAR 3 TO YEAR 6

## FORMAL SUMMER UNIFORM: TERMS 1 AND 4

OPTION 1

Summer Dress



OPTION 2

Short Sleeve Banded  
Shirt and Junior  
Culottes



Junior Culottes can still be worn, but are no longer available for sale in the Uniform Shop.

OPTION 3

Short Sleeve Banded  
Shirt and Elastic Waist  
Shorts



OPTION 4

Short Sleeve Banded  
Shirt and Flat Front  
Shorts



OPTION 5

Short Sleeve Banded  
Shirt and Tailored  
Shorts



OPTION 6

Short Sleeve Banded  
Shirt and Elastic Waist  
Trousers



OPTION 7

Short Sleeve Banded  
Shirt and Flat Front  
Trousers



OPTION 8

Short Sleeve Banded  
Shirt and Tailored  
Trousers



# YEAR 3 TO YEAR 6

## FORMAL SUMMER UNIFORM: TERMS 1 AND 4

### OUTERWEAR OPTIONS

College Jumper



AND/OR

Sport Softshell Jacket



### COMPULSORY ITEMS

Shoes



OR



Black rigid leather  
lace-up shoes  
Small heel only, as per  
image above.

Black leather velcro  
strapped shoes

*Mary Jane style shoes are not acceptable.*

Socks



OR



Navy Socks  
Worn with dress or  
culottes.

Black Socks  
Worn with shorts or  
trousers.

# YEAR 3 TO YEAR 6

## FORMAL WINTER UNIFORM: TERMS 2 AND 3

### OPTION 1

**YEAR 3**

Winter Long Sleeve Shirt  
and Winter Pinafore



**WITH**



The winter pinafore can still be worn, but is no longer available for sale in the Uniform Shop.  
Bib can be removed and item can be worn as a skirt.

### OPTION 2

**YEAR 3 TO YEAR 6**

Winter Long Sleeve Shirt  
and Winter Skirt



### OPTION 3

Junior Winter Banded Shirt  
and Elastic Waist Pants



### OPTION 4

Junior Winter Banded Shirt  
and Flat Front Trousers



### OPTION 5

Junior Winter Banded Shirt  
and Tailored Trousers



# YEAR 3 TO YEAR 6

## FORMAL WINTER UNIFORM: TERMS 2 AND 3

### COMPULSORY ITEMS

#### Shoes



Black rigid leather  
lace-up shoes  
Small heel only, as per  
image above.

OR



Black leather velcro  
strapped shoes

*Mary Jane style shoes are not acceptable.*

#### Socks and Tights



Navy Socks  
Worn with skirt  
or pinafore.

OR



Winter Tights  
(70 - 200 denier)  
Worn with skirt or  
pinafore.

OR



Black Socks  
Worn with  
trousers.

*Socks and tights cannot be worn together.*

#### Tie



Junior X Tie  
(Year 3 to Year 6)

Worn with skirt or pinafore.

*X tie can still be worn, but is  
no longer available for sale in  
the Uniform Shop.*

OR



Junior Tie  
(Year 3 to Year 6)

Worn with skirt, pinafore or  
trousers.

*Worn with top button done up on shirt.*

### OUTERWEAR OPTIONS

#### College Jumper



AND/OR

#### Sport Softshell Jacket



## YEAR 3 TO YEAR 6

**PE UNIFORM** | Can be worn for the full day that students have a PE lesson.

### PE POLO

Hardy (green)



Morphett (blue)



McLaren (yellow)



Reynell (red)



### PE BOTTOMS OPTIONS

PE Shorts



OR



*The top layer of the shorts should not be firm on the thigh.*

PE Trackpants



### OUTERWEAR OPTIONS

Sport Softshell Jacket



Sports Rugby Jumper



### COMPULSORY ITEMS

Supportive Athletic Shoes and Sport Socks



*No skate shoes/street shoe (ie: Adidas Samba/Converse/Vans or similar).*

# YEAR 3 TO YEAR 6

## ADDITIONAL ITEMS

### COMPULSORY

College Bag



College Hat



Year 3 to Year 6 students must have their hats on outside all year round - a "No Hat, No Play" Policy is enforced.

Library Bag

**YEAR 3 TO YEAR 5**



### OPTIONAL

Woodcroft College Scarf



Terms 2 and 3 only.

Hair Accessories



Term 1 and 4

Term 2 and 3

Woodcroft College Beanie



Worn for extracurricular sport only.

Earrings



Round studs only



Sleepers no larger than 14mm

The styles above are available from the Uniform Shop.  
Please see page 21 for detailed information on the styles and sizes allowed.

# YEAR 7 TO YEAR 12

## FORMAL SUMMER UNIFORM: TERMS 1 AND 4

OPTION 1

Summer Dress



OPTION 2

Short Sleeve Banded  
Shirt and Elastic Waist  
Shorts



OPTION 3

Short Sleeve Banded  
Shirt and Flat Front  
Shorts



OPTION 4

Short Sleeve Banded  
Shirt and Tailored  
Shorts



OPTION 5

Short Sleeve Banded  
Shirt and Flat Front  
Trousers



OPTION 6

Short Sleeve Banded  
Shirt and Tailored  
Trousers



# YEAR 7 TO YEAR 12

## FORMAL SUMMER UNIFORM: TERMS 1 AND 4

### OUTERWEAR OPTION

College Jumper



---

### COMPULSORY ITEMS

Shoes



Black rigid leather lace-up shoes  
Small heel only, as per image above.

*Mary Jane style shoes are not acceptable.*

Socks



Navy Socks  
Worn with dress.

OR



Black Socks  
Worn with shorts or  
trousers.

# YEAR 7 TO YEAR 12

## FORMAL WINTER UNIFORM: TERMS 2 AND 3

### OPTION 1

Winter Long Sleeve  
Shirt and Winter  
Skirt



### OPTION 2

Winter Long Sleeve  
Shirt and Flat Front  
Trousers



### OPTION 3

Winter Long Sleeve  
Shirt and Tailored  
Trousers



## OUTERWEAR OPTIONS

### College Blazer



#### **COMPULSORY**

The College Blazer is not mandatory for Terms 1 and 4 but is required for all official events across the school year.

### College Jumper



# YEAR 7 TO YEAR 12

## FORMAL WINTER UNIFORM: TERMS 2 AND 3

### COMPULSORY ITEMS

#### Shoes



Black rigid leather lace-up shoes  
Small heel only, as per image above.

*Mary Jane style shoes are not acceptable.*

#### Socks and Tights



OR



OR



Navy Socks  
Worn with skirt.

Winter Tights  
(70 - 200 denier)  
Worn with skirt.

Black Socks  
Worn with trousers.

*Socks and tights cannot be worn together.*

#### Tie



OR



Middle School Tie  
(Year 7 to Year 9)

Senior School Tie  
(Year 10 to Year 12)

*Worn with top button done up on shirt.*

# YEAR 7 TO YEAR 12

**PE UNIFORM** | Can be worn for the full day that students have a PE lesson.

## PE POLO

Hardy (green)



Morphett (blue)



McLaren (yellow)



Reynell (red)



## PE BOTTOMS OPTIONS

PE Shorts



OR



*The top layer of the shorts should not be firm on the thigh.*

PE Trackpants



## OUTERWEAR OPTIONS

Sport Softshell Jacket



Sports Rugby Jumper



## COMPULSORY ITEMS

Supportive Athletic Shoes and Sport Socks



*No skate shoes/street shoe (ie: Adidas Samba/Converse/Vans or similar).*

# YEAR 7 TO YEAR 12

## ADDITIONAL ITEMS

### COMPULSORY

#### College Bag



#### College Hat



Worn in Terms 1 and 4. A "No Hat, No Play" Policy is enforced.

### OPTIONAL

#### Woodcroft College Scarf



Terms 2 and 3 only.

#### Woodcroft College Beanie



Worn for extracurricular sport only.

#### Hair Accessories



Term 1 and 4

Term 2 and 3

#### Black Leather Belt



#### Earrings



Round studs only



Sleepers no larger than 14mm

The styles above are available from the Uniform Shop.  
Please see page 21 for detailed information on the styles and sizes allowed.

## EARRING REQUIREMENTS

The Uniform Shop is now stocking Studex brand earrings which are surgical-grade stainless steel and hypoallergenic. Alternatively, you will be able to purchase the earrings in retail shops, chemists or online.

Below are the styles available from the Uniform Shop.

- SM200W – Mini Traditional Stud – Silver
- SM200Y – Mini Traditional Stud – Gold
- SR200W – Regular Traditional Stud – Silver
- SR200Y – Regular Traditional Stud – Gold
- 840 – Sleeper – 12mm Plain Silver
- 844 – Sleeper – 14mm Plain Silver
- M840 – Sleeper – 8mm Plain Silver
- 860 – Sleeper – 12mm Plain Gold
- 864 – Sleeper – 14mm Plain Gold
- M860 – Sleeper – 8mm Plain Gold




---

## RELIGIOUS AND CULTURAL HEADWEAR

Students who wear religious or cultural headwear, including a patka, turban, hijab or other garments, are asked that such headwear be in the official College colour of navy.



**EXTRACURRICULAR SPORT UNIFORM**

## SPORT UNIFORM EXPECTATIONS

It is important that all students who represent Woodcroft College are correctly dressed for the sport that they are playing.

The following pages outline sport uniform requirements. Where possible, PE uniform can be worn for matches. Some sports have specific tops or pants that must be worn. Most of these items are available for purchase from the Uniform Shop.

If a student does not have a specific uniform item required for statewide knockout competitions, an item can be loaned to them through the Sport Office.

Custom outfits for Middle and Senior School Hip Hop students can be ordered through the Sports Office.

For Junior School, any College guernsey/top that is not the PE uniform, will be provided for the season and must be returned.

For Uniform Shop information, please see page 4 of this handbook or visit:

<https://www.noone.com.au/school/woodcroft-college/shop>

## OUTERWEAR OPTIONS

If required for warmth, the following items should be worn, including intrastate and interstate trips.

Any hoodies ordered for a sporting trip or tour can also be worn.

**Sport Softshell Jacket**



**Sports Rugby Jumper**



**Sports Training Top**  
**MIDDLE AND SENIOR**  
**SCHOOL ONLY**



## HEADWEAR

The College hat should be worn for outdoor sports (where appropriate) - Junior School all year round and Middle/Senior School in Term 1 and 4. The College beanie can be worn to and from games, but not while competing.

**College Hat**



**Woodcroft College Beanie**



# PE UNIFORM

## JUNIOR SCHOOL

All Reception to Year 2 Sports | Cheer | Hip Hop/Acro | Run Club | Skipping Club  
Tennis Coaching | T-Ball | Year 6 Extension Program Sports | Yoga

## MIDDLE AND SENIOR SCHOOL

Badminton | Cross Country | Indoor Cricket | Mountain Biking  
Run Club | Table Tennis | Wellbeing Program | Volleyball (weekly competition)

### PE POLO

Hardy (green)



Morphett (blue)



McLaren (yellow)



Reynell (red)



### PE BOTTOMS OPTIONS

PE Shorts



OR



PE Trackpants



### SHOES AND SOCKS

Supportive Athletic Shoes and Sport Socks



*No skate shoes/street shoe (ie: Adidas Samba/Converse/Vans or similar).*

# AFL UNIFORM

## JUNIOR SCHOOL: YEAR 3 AND YEAR 4

### Woodcroft AFL Guernsey



Provided for the season.

### PE Shorts



*Unisex*

**OR**



*Girls*

### Red Football Socks and Football Boots



Socks available from the Uniform Shop.

Boots available from a sports store.

## MIDDLE AND SENIOR SCHOOL

### Woodcroft AFL Guernsey



Available from the Uniform Shop.

### Navy Football Shorts



Available from a sports store.

*Unisex*

**OR**

**PE Shorts**



*Girls*

### Red Football Socks and Football Boots



Socks available from the Uniform Shop.

Boots available from a sports store.

# BASKETBALL UNIFORM

## JUNIOR SCHOOL: YEAR 3 TO YEAR 6 AND MIDDLE AND SENIOR SCHOOL

### Woodcroft Basketball Guernsey



Junior School  
Provided for the season.  
Middle and Senior School  
Available from the Uniform Shop.

### PE Shorts



*Unisex*

**OR**



*Girls*

### PE Socks and Supportive Athletic Shoes



Sneakers should be suitable for  
wearing on a basketball court.

Middle and Senior School  
Basketball sneakers are recommended.

*No skate or street shoe.*

# CRICKET UNIFORM

## JUNIOR SCHOOL: YEAR 3 TO YEAR 5

### PE Polo



### White Cricket Pants



Available from a sports store.

### PE Socks and Supportive Athletic Shoes



# CRICKET UNIFORM

## MIDDLE AND SENIOR SCHOOL

**Woodcroft Cricket Top**



**OR**



Available from the  
Uniform Shop.

**White Cricket Pants**



Available from a sports store.

**PE Socks and  
Cricket Shoes**



Cricket shoes available  
from a sports store.

**Woodcroft Navy  
Cricket Cap**



Available from the  
Uniform Shop.

## CHEER UNIFORM

### MIDDLE AND SENIOR SCHOOL

Cheer Dress



Ordered through the Sport Office.

White Socks and White Shoes



*See page 24 for Junior School Cheer.*

## NETBALL UNIFORM

### JUNIOR SCHOOL: YEAR 3 TO YEAR 6 AND MIDDLE/SENIOR SCHOOL

Woodcroft Netball Dress



Junior School  
Provided for the season.

Middle and Senior School  
Available from the Uniform Shop.

PE Socks and Supportive Athletic Shoes



Middle and Senior School  
Netball sneakers are recommended.

*No skate or street shoe.*

# PEDAL PRIX UNIFORM

## MIDDLE/SENIOR SCHOOL

Pedal Prix T-Shirt



Ordered through the Sport Office.

PE Bottoms



*Unisex*

OR



OR



*Girls*

Supportive Athletic Shoes and Sport Socks



*No skate shoes/street shoe.*

# SOCCER UNIFORM

## JUNIOR SCHOOL: YEAR 3 TO YEAR 6 AND MIDDLE AND SENIOR SCHOOL

### Woodcroft Soccer Top



Junior School  
Provided for the season.  
Middle and Senior School  
Available from the Uniform Shop.

### PE Shorts



*Unisex*

**OR**



*Girls*

### Red Football Socks and Football (Soccer) Boots



Socks available  
from the Uniform Shop.

Boots available  
from a sports store.

# TENNIS UNIFORM

## MIDDLE/SENIOR SCHOOL

### Woodcroft Tennis Top



**OR**



Available from the  
Uniform Shop.

### PE Shorts



*Unisex*

**OR**



*Girls*

### Woodcroft Navy Tennis Cap



Available from the  
Uniform Shop.

### PE Socks and Supportive Athletic Shoes



Middle and Senior School  
Tennis sneakers are recommended.

*No skate or street shoe.*

# VOLLEYBALL UNIFORM

## SSSA KO, STATE SCHOOLS CUP AND GOLD COAST TOUR

Woodcroft Soccer Top



PE Shorts



*Unisex*

**OR**



*Girls*

Supportive Athletic Shoes  
and Sport Socks



*No skate shoes/street shoe.*



An Independent Coeducational Anglican ELC - Year 12 School

PO Box 114, Woodcroft SA 5162

Ph: 8322 2333

W: [woodcroft.sa.edu.au](http://woodcroft.sa.edu.au)

Cricos #01645K