



School Performance Report 2025



Find Your Remarkable



OUR PURPOSE

At Woodcroft College we exist to shape well-balanced, successful young people.

We encourage our students to explore and understand their potential. We teach kindness and generosity to ensure that when our students leave us, they understand how the world works, how they can be part of it, how they can create change and always work to be the best they can be. We want our students to be comfortable in their own skin, to express themselves and celebrate what makes them unique.

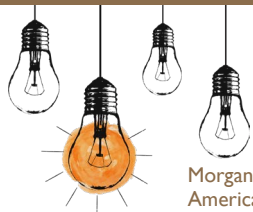
In short, we help our students *“Find Your Remarkable.”*

OUR VALUES

Inspire Confidence

At the very heart of Woodcroft College is a desire to inspire confidence in our students and each other. We support our students to be the best they can be. We help them develop a passion for life rather than a hunger for approval. And we provide an environment that builds character - mind, body and spirit. At Woodcroft, we want our students to join in, take risks and have a go. And this challenge also extends to our staff, as everyday we ask “who have I inspired today?”.

“The same light you see in others is shining in you, too.”



Morgan Harper Nichols (1990 -),
American artist, poet and musician

Generous Spirit

As a school founded in the Anglican tradition of kindness and compassion, Woodcroft College is recognised for its spirit of generosity, social justice and service. We encourage our students to understand, accept and value each others’ differences without judgement. And we proudly display the virtues of natura and magnanimity - to be the very best version of ourselves - not just for yourself, but for others.



Winston Churchill (1874 - 1965),
Former British Prime Minister

“We make a living by what we get; we make a life by what we give.”

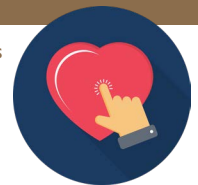
Real Connection

Woodcroft is home to a close-knit community of educators, students and their families. In a world that has become increasingly disconnected, we pride ourselves on building genuine, lasting relationships. We respect these relationships because ours is a partnership and a contract with our community. We are trusted to nourish those who look to us for knowledge and guidance.

And as colleagues, the relationships among staff at Woodcroft allow us to support and challenge each other, because the work we do matters.

“In a world of algorithms, hashtags and followers, know the true importance of human connection.”

Anonymous



Keep Growing

A future-focused, growth mindset is a fundamental characteristic of healthy, happy individuals - and it is a central tenet for all at Woodcroft. We provide a supportive environment which encourages students to embrace change and expand their horizons. We create space for young people to grow and learn through diverse experiences. And we provide them with the tools and knowledge needed to embrace their futures with grace and vigour.

Eric Butterworth
(1916 - 2003),
Canadian-American author



“Don’t go through life, grow through life.”

GUIDING PRINCIPLES



Our community is built upon strong relationships, shared values and is shaped by our unique experiences.



Our community enables us to grow and flourish together.



We are the creators and evaluators of a shared learning journey.



We are imaginative, innovative and take risks with our learning.



We are preparing for the future by developing capabilities and connecting learning to authentic real-world contexts.

ABOUT WOODCROFT COLLEGE

Woodcroft College is an independent coeducational Anglican school located in Morphett Vale. Established in 1989, Woodcroft welcomes students from ELC to Year 12 into a progressive, engaged and energetic learning community.

The College offers a broad curriculum complemented by an extra-curricular program designed to encourage students at all year levels to explore and understand their potential. Our commitment is to help every student Find Their Remarkable.

Woodcroft is known for its strong sense of community, a positive values-based culture and a learning and teaching environment driven by Guiding Principles.

The school enjoys an enviable reputation and attracts families from across the southern region of Adelaide. Enrolments have grown to over 1,700 students from ELC to Year 12 and the College employs 320 staff.



We acknowledge the Kurna people as the Traditional Owners of the land on which we gather, honouring their deep, enduring connection to Country.

We pay our respects to their Elders, past and present, whose wisdom guides us in caring for this land. Committed to walking gently, we pledge to listen, learn, and grow together, fostering respect for the spiritual significance of this place.

STUDENTS

OVERVIEW

Junior School	569
Middle School	567
Senior School	468
	1,604

These numbers include 20 Indigenous students.

INTERNATIONAL STUDENTS

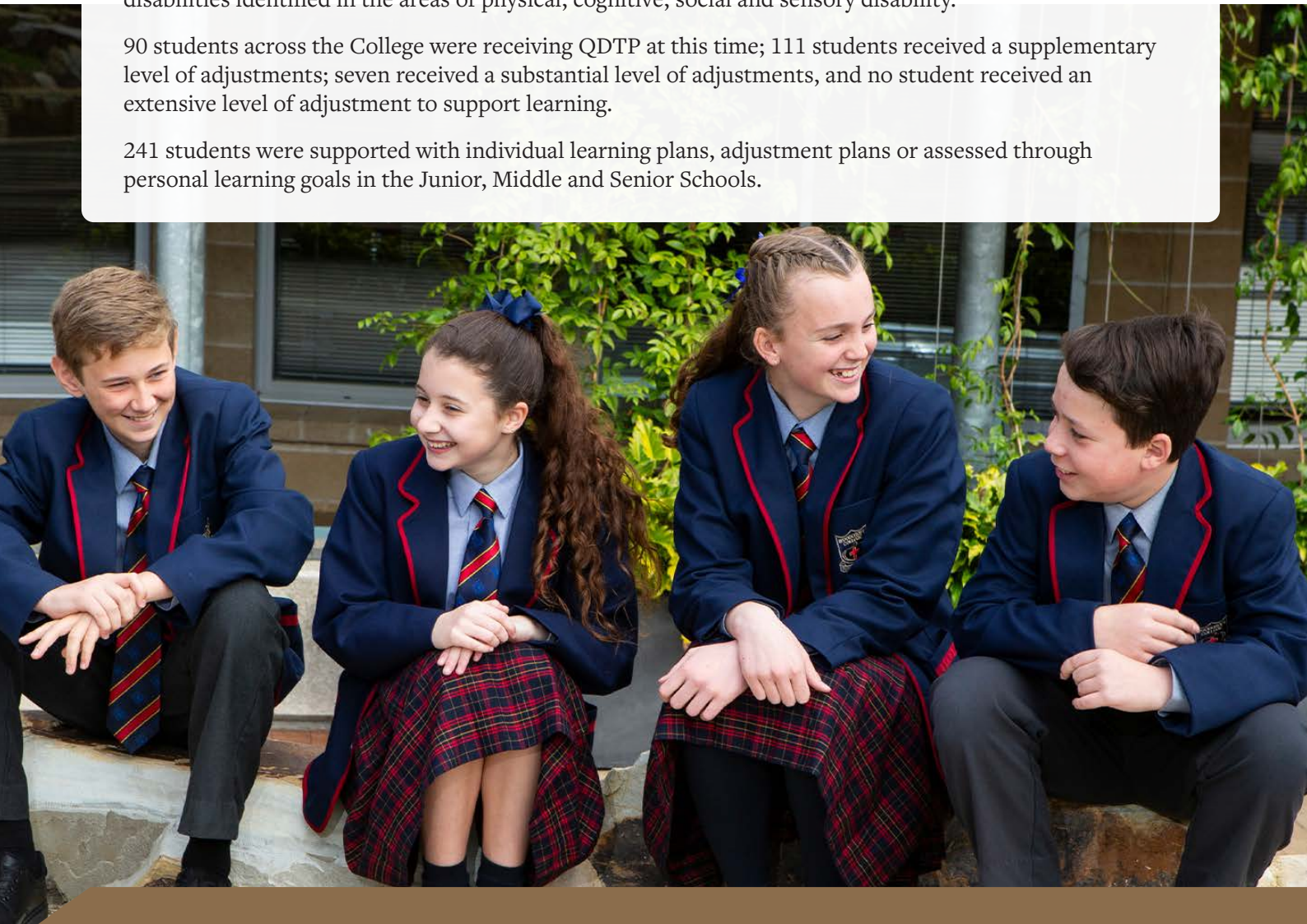
China	6
Germany	1
Hong Kong	9
Macau	3
Malaysia	1
Vietnam	4
	24

As part of the Nationally Consistent Collection of Data for Students with Disabilities, 208 students across the College received adjustments to ensure that they had equal access to the school's educational program.

Varied levels of adjustments (ie: Quality Differentiated Teaching Practices QDTP, Supplementary, Substantial or Extensive) were provided to 86 primary students and 122 secondary students with disabilities identified in the areas of physical, cognitive, social and sensory disability.

90 students across the College were receiving QDTP at this time; 111 students received a supplementary level of adjustments; seven received a substantial level of adjustments, and no student received an extensive level of adjustment to support learning.

241 students were supported with individual learning plans, adjustment plans or assessed through personal learning goals in the Junior, Middle and Senior Schools.



TEACHER QUALIFICATIONS

The College has highly trained and qualified staff, with all teaching staff meeting the requirements of the Teachers Registration Board. All teachers are involved in relevant Professional Development.

Masters or higher	20
Bachelor Degree	137
Bachelor Degree and Graduate Diploma	31
Diploma	6

WORKFORCE COMPOSITION

Australia	283
United Kingdom	9
India	3
England	3
Germany	1
China	1
New Zealand	1
South Africa	1
Unknown	1
Not Selected	50

There is one Australian Indigenous staff working at the College.

STUDENT ATTENDANCE

Below are the attendances for Years 1 to 10. The average attendance was 90.62%.

YEAR	ATTENDANCE %
1	92.0%
2	92.3%
3	91.4%
4	90.9%
5	91.2%
6	92.1%
7	91.3%
8	89.9%
9	88.2%
10	87.9%

Patterns of student attendance are monitored. Daily records are kept and if the College has not been notified by a parent of a student's absence, the parent is contacted. Protracted student absences are followed up with the families concerned and reported to state government authorities as required.

STUDENT OUTCOMES IN STANDARDISED NATIONAL LITERACY AND NUMERACY TESTING (NAPLAN)

Each year, all students in Years 3, 5, 7 and 9 participate in the Standardised National Literacy and Numeracy Testing (NAPLAN) and in 2025, achieved the following outcomes.

YEAR 3 2025	SCHOOL MEAN MARK	NATIONAL MEAN MARK
Grammar and Punctuation	421	408
Numeracy	410	405
Reading	410	402
Spelling	412	405
Writing	427	414

YEAR 5 2025	SCHOOL MEAN MARK	NATIONAL MEAN MARK
Grammar and Punctuation	487	497
Numeracy	481	492
Reading	496	492
Spelling	492	487
Writing	482	480

YEAR 7 2025	SCHOOL MEAN MARK	NATIONAL MEAN MARK
Grammar and Punctuation	554	539
Numeracy	557	545
Reading	556	538
Spelling	552	542
Writing	562	538

YEAR 9 2025	SCHOOL MEAN MARK	NATIONAL MEAN MARK
Grammar and Punctuation	577	559
Numeracy	583	573
Reading	576	568
Spelling	571	569
Writing	608	575

SENIOR SECONDARY OUTCOMES



DUX OF THE COLLEGE
Jordan Brown
 99.00 ATAR



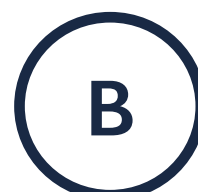
PROXIME ACCESSIT
Harley Gill
 98.35 ATAR



128 of the 129 students attained their Certificate



Students in the A+ to B- Range



Medium Grade



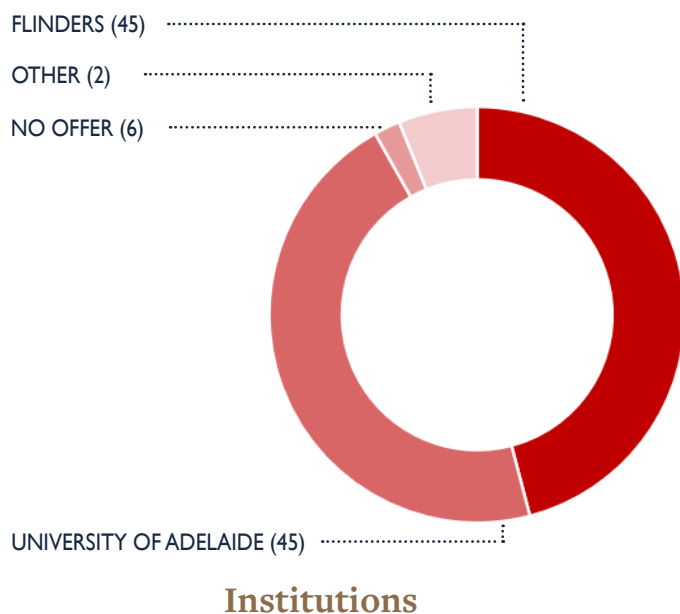
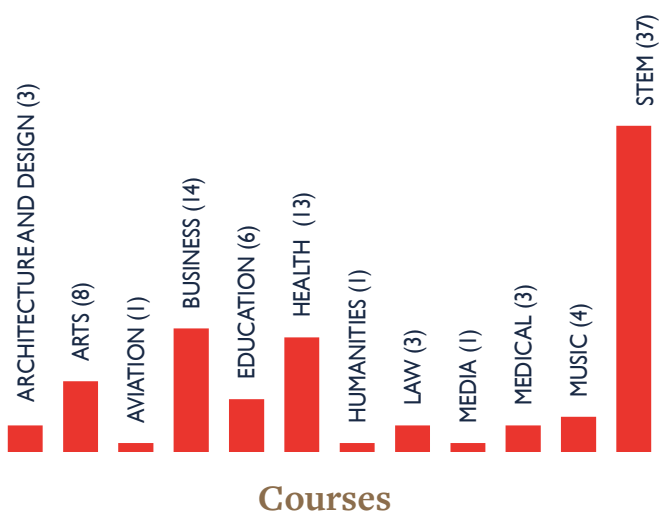
Average College ATAR



SACE Stage 2 VET Students

POST SCHOOL DESTINATIONS

98 students applied for post-secondary courses, with 81 successful in the first round of offers.



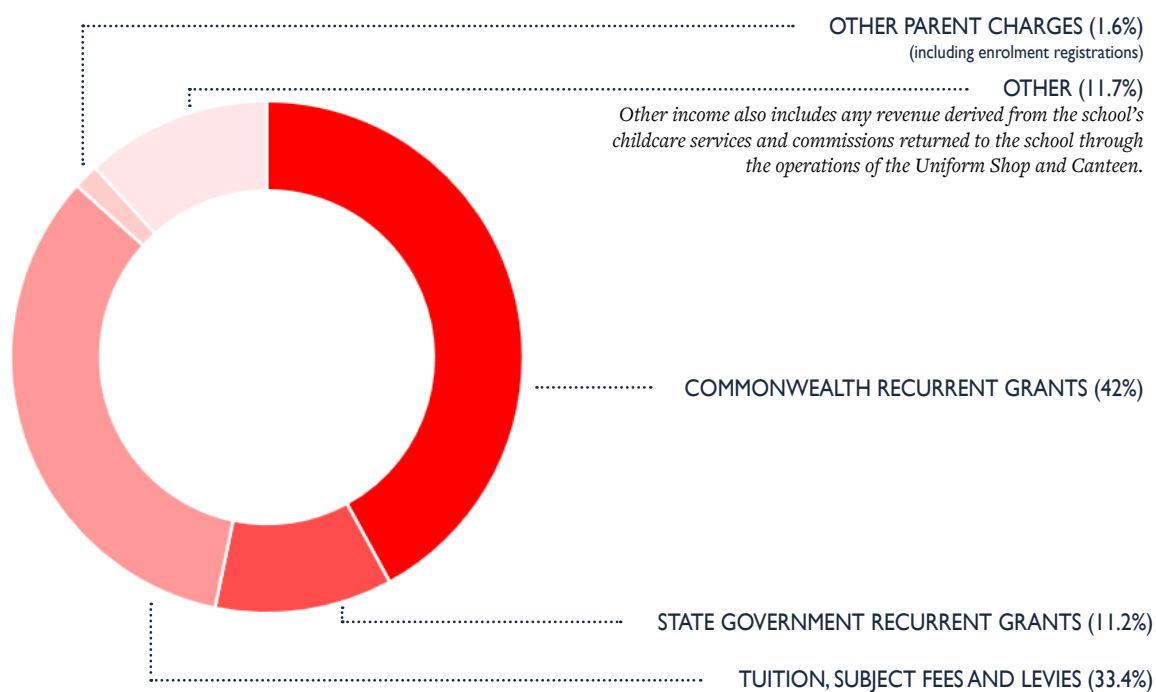
LEVELS OF SATISFACTION

All families at the College had the opportunity to provide feedback to the school through a Parent Satisfaction Survey.

The school community can access the Principal directly along with members of the College Leadership Team and other school leaders.

Comments and feedback are taken into consideration as part of the annual planning process.

INCOME





An Independent Coeducational Anglican ELC - Year 12 School

PO Box 114, Woodcroft SA 5162

Ph: 8322 2333

W: woodcroft.sa.edu.au

Cricos #01645K